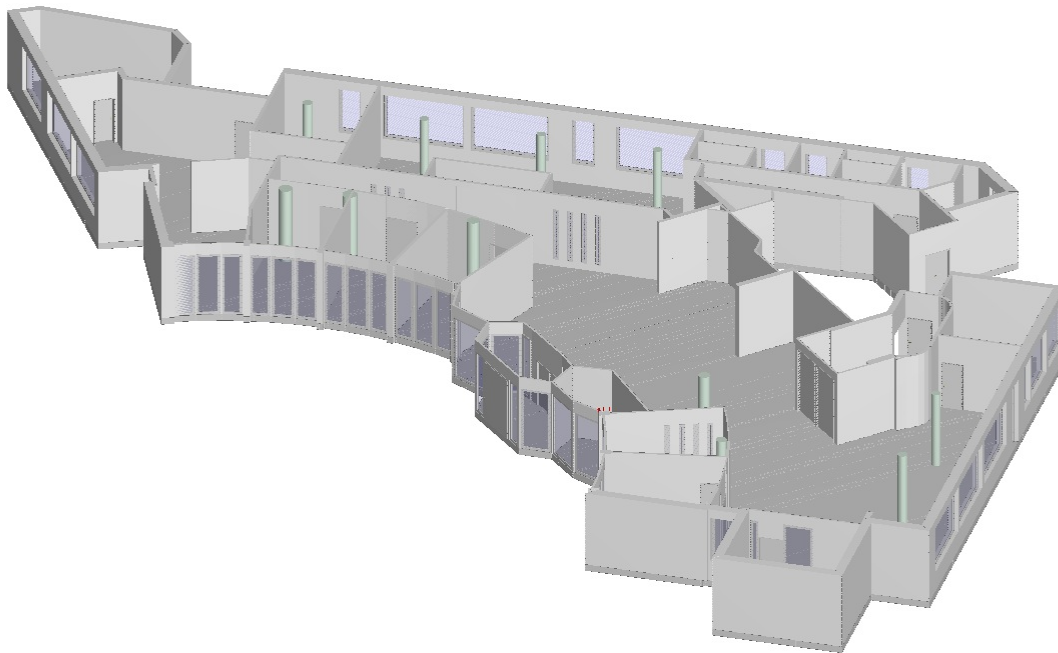

Ihre iisy® - Aufmaßunterlagen

Musterstraße 2, 44444 Musterstadt



iisy GmbH

Am Sodebach 2 | 07751 Golmsdorf

Tel.: 036427 - 23 6000

Internet: www.iisy.info

Mail: mail@iisy.info

Flächenermittlung nach DIN277:

Nr	Art	Raum	Flächen in 1m Höhe	Flächen in 2m Höhe	Fläche
EG					
1	NF	Büro 1 GE1		5.42 m x 2.70 m / 2 + (5.42 m + 5.42 m) / 2 x 0.69 m + (5.42 m + 4.01 m) / 2 x 0.71 m + 4.01 m x 2.01 m / 2	18.43 m ²
2	NF	Büro 2 GE1		0.20 m x 0.10 m / 2 + (0.20 m + 0.33 m) / 2 x 0.07 m + 0.13 m x 0.07 m / 2 + (0.46 m + 2.07 m) / 2 x 0.82 m + (2.07 m + 3.17 m) / 2 x 0.58 m + (3.17 m + 4.50 m) / 2 x 0.74 m + (4.50 m + 4.57 m) / 2 x 0.04 m + 0.08 m x 0.04 m / 2 + (4.65 m + 5.67 m) / 2 x 0.60 m + (5.67 m + 5.66 m) / 2 x 0.04 m + (5.66 m + 5.51 m) / 2 x 0.32 m + (5.51 m + 5.27 m) / 2 x 0.10 m + (5.27 m + 5.24 m) / 2 x 0.13 m + (5.24 m + 3.64 m) / 2 x 0.68 m + (3.64 m + 1.75 m) / 2 x 0.83 m + (1.75 m + 0.46 m) / 2 x 0.59 m + (0.28 m + 0.10 m) / 2 x 0.09 m + 0.18 m x 0.09 m / 2 + 0.10 m x 0.05 m / 2	17.88 m ²
3	NF	Büro 3 GE1		2.18 m x 1.05 m / 2 + (2.18 m + 3.74 m) / 2 x 0.77 m + (3.74 m + 5.30 m) / 2 x 0.81 m + (5.30 m + 5.36 m) / 2 x 0.03 m + (5.36 m + 5.41 m) / 2 x 0.03 m + 0.07 m x 0.03 m / 2 + 0.07 m x 0.05 m / 2 + (5.47 m + 5.49 m) / 2 x 0.05 m + 0.05 m x 0.08 m / 2 + (5.51 m + 5.54 m) / 2 x 0.08 m + (5.54 m + 5.78 m) / 2 x 0.12 m + (5.78 m + 5.42 m) / 2 x 0.58 m + 0.18 m x 0.42 m / 2 + 0.18 m x 0.16 m + 0.07 m x 0.16 m / 2 + (5.59 m + 5.37 m) / 2 x 0.08 m + 0.07 m x 0.05 m / 2 + 0.02 m x 0.05 m / 2 + (0.02 m + 0.01 m) / 2 x 0.03 m + (5.37 m + 5.11 m) / 2 x 0.09 m + (5.11 m + 2.49 m) / 2 x 0.94 m	

4	NF	Raum 1 GE1	$(2.49 \text{ m} + 0.48 \text{ m}) / 2 \times 0.74 \text{ m}$ $(0.26 \text{ m} + 0.03 \text{ m}) / 2 \times 0.08 \text{ m}$ $0.22 \text{ m} \times 0.08 \text{ m} / 2$ $(0.03 \text{ m} + 0.01 \text{ m}) / 2 \times 0.01 \text{ m}$ $0.01 \text{ m} \times 0.01 \text{ m} / 2$ $1.50 \text{ m} \times 0.63 \text{ m} / 2$ $(1.50 \text{ m} + 1.46 \text{ m}) / 2 \times 0.11 \text{ m}$ $(1.46 \text{ m} + 1.71 \text{ m}) / 2 \times 0.10 \text{ m}$ $(1.71 \text{ m} + 2.41 \text{ m}) / 2 \times 1.39 \text{ m}$ $(2.41 \text{ m} + 2.55 \text{ m}) / 2 \times 1.34 \text{ m}$ $(2.55 \text{ m} + 2.10 \text{ m}) / 2 \times 0.41 \text{ m}$ $2.10 \text{ m} \times 0.71 \text{ m} / 2$	17.73 m ²
5	NF	Büro 4 GE1	$0.20 \text{ m} \times 0.06 \text{ m} / 2$ $0.18 \text{ m} \times 0.06 \text{ m} / 2$ $(0.38 \text{ m} + 2.60 \text{ m}) / 2 \times 0.77 \text{ m}$ $(2.60 \text{ m} + 5.36 \text{ m}) / 2 \times 0.93 \text{ m}$ $(5.36 \text{ m} + 5.57 \text{ m}) / 2 \times 0.07 \text{ m}$ $(5.57 \text{ m} + 5.67 \text{ m}) / 2 \times 0.72 \text{ m}$ $(5.67 \text{ m} + 5.44 \text{ m}) / 2 \times 0.10 \text{ m}$ $(5.44 \text{ m} + 5.45 \text{ m}) / 2 \times 0.08 \text{ m}$ $(5.45 \text{ m} + 4.06 \text{ m}) / 2 \times 0.70 \text{ m}$ $(4.06 \text{ m} + 4.07 \text{ m}) / 2 \times 0.03 \text{ m}$ $(4.07 \text{ m} + 2.69 \text{ m}) / 2 \times 0.67 \text{ m}$ $(2.59 \text{ m} + 2.56 \text{ m}) / 2 \times 0.01 \text{ m}$ $(0.10 \text{ m} + 0.07 \text{ m}) / 2 \times 0.01 \text{ m}$ $(2.56 \text{ m} + 2.50 \text{ m}) / 2 \times 0.03 \text{ m}$ $0.07 \text{ m} \times 0.03 \text{ m} / 2$ $2.50 \text{ m} \times 1.19 \text{ m} / 2$	8.68 m ²
6	NF	Büro 5 GE1	$0.13 \text{ m} \times 0.06 \text{ m} / 2$ $(0.13 \text{ m} + 0.24 \text{ m}) / 2 \times 0.05 \text{ m}$ $0.11 \text{ m} \times 0.05 \text{ m} / 2$ $(0.35 \text{ m} + 1.75 \text{ m}) / 2 \times 0.63 \text{ m}$ $(1.75 \text{ m} + 3.68 \text{ m}) / 2 \times 0.83 \text{ m}$ $(3.68 \text{ m} + 5.32 \text{ m}) / 2 \times 0.68 \text{ m}$ $(5.32 \text{ m} + 5.39 \text{ m}) / 2 \times 0.14 \text{ m}$ $(5.39 \text{ m} + 5.55 \text{ m}) / 2 \times 0.06 \text{ m}$ $(5.55 \text{ m} + 5.70 \text{ m}) / 2 \times 0.29 \text{ m}$ $(5.70 \text{ m} + 4.54 \text{ m}) / 2 \times 0.69 \text{ m}$ $(4.54 \text{ m} + 3.18 \text{ m}) / 2 \times 0.77 \text{ m}$ $(3.18 \text{ m} + 2.06 \text{ m}) / 2 \times 0.61 \text{ m}$ $(1.97 \text{ m} + 1.89 \text{ m}) / 2 \times 0.04 \text{ m}$ $0.09 \text{ m} \times 0.04 \text{ m} / 2$ $1.89 \text{ m} \times 1.00 \text{ m} / 2$	17.59 m ²
7	NF	Büro 6 GE1	$0.11 \text{ m} \times 0.05 \text{ m} / 2$ $(0.11 \text{ m} + 0.23 \text{ m}) / 2 \times 0.06 \text{ m}$ $0.13 \text{ m} \times 0.06 \text{ m} / 2$ $(0.36 \text{ m} + 1.50 \text{ m}) / 2 \times 0.55 \text{ m}$ $(1.50 \text{ m} + 2.95 \text{ m}) / 2 \times 0.65 \text{ m}$ $(2.95 \text{ m} + 4.18 \text{ m}) / 2 \times 0.52 \text{ m}$ $(4.18 \text{ m} + 4.24 \text{ m}) / 2 \times 0.19 \text{ m}$ $(4.24 \text{ m} + 4.35 \text{ m}) / 2 \times 0.04 \text{ m}$	17.83 m ²

			$(4.35 \text{ m} + 4.86 \text{ m}) / 2 \times 1.44 \text{ m}$ $(4.86 \text{ m} + 3.49 \text{ m}) / 2 \times 0.84 \text{ m}$ $(3.49 \text{ m} + 1.81 \text{ m}) / 2 \times 0.84 \text{ m}$ $(1.81 \text{ m} + 1.80 \text{ m}) / 2 \times 0.05 \text{ m}$ $(1.80 \text{ m} + 0.09 \text{ m}) / 2 \times 0.84 \text{ m}$ $0.09 \text{ m} \times 0.04 \text{ m} / 2$	18.05 m ²
8	NF	Büro 7 GE1	$0.26 \text{ m} \times 0.11 \text{ m} / 2$ $(0.26 \text{ m} + 0.35 \text{ m}) / 2 \times 0.04 \text{ m}$ $0.10 \text{ m} \times 0.04 \text{ m} / 2$ $(0.45 \text{ m} + 1.18 \text{ m}) / 2 \times 0.31 \text{ m}$ $(1.18 \text{ m} + 2.44 \text{ m}) / 2 \times 0.49 \text{ m}$ $(2.44 \text{ m} + 3.53 \text{ m}) / 2 \times 0.38 \text{ m}$ $(3.53 \text{ m} + 3.59 \text{ m}) / 2 \times 0.20 \text{ m}$ $(3.59 \text{ m} + 3.75 \text{ m}) / 2 \times 0.06 \text{ m}$ $(3.75 \text{ m} + 3.95 \text{ m}) / 2 \times 0.81 \text{ m}$ $(3.95 \text{ m} + 5.60 \text{ m}) / 2 \times 2.74 \text{ m}$ $(5.60 \text{ m} + 4.71 \text{ m}) / 2 \times 0.62 \text{ m}$ $0.24 \text{ m} \times 0.08 \text{ m} / 2$ $(4.47 \text{ m} + 4.36 \text{ m}) / 2 \times 0.08 \text{ m}$ $(4.36 \text{ m} + 4.25 \text{ m}) / 2 \times 0.08 \text{ m}$ $(3.96 \text{ m} + 3.91 \text{ m}) / 2 \times 0.12 \text{ m}$ $(3.91 \text{ m} + 3.91 \text{ m}) / 2 \times 0.03 \text{ m}$ $(3.91 \text{ m} + 0.54 \text{ m}) / 2 \times 1.18 \text{ m}$ $0.09 \text{ m} \times 0.03 \text{ m} / 2$ $(0.45 \text{ m} + 0.35 \text{ m}) / 2 \times 0.03 \text{ m}$ $0.35 \text{ m} \times 0.12 \text{ m} / 2$	26.59 m ²
9	NF	Büro 8 GE1	$2.27 \text{ m} \times 1.14 \text{ m} / 2$ $(2.27 \text{ m} + 2.26 \text{ m}) / 2 \times 0.27 \text{ m}$ $0.75 \text{ m} \times 0.37 \text{ m} / 2$ $(2.26 \text{ m} + 2.25 \text{ m}) / 2 \times 0.37 \text{ m}$ $(3.00 \text{ m} + 3.00 \text{ m}) / 2 \times 0.43 \text{ m}$ $(3.00 \text{ m} + 4.17 \text{ m}) / 2 \times 0.81 \text{ m}$ $0.26 \text{ m} \times 0.10 \text{ m} / 2$ $(4.17 \text{ m} + 4.31 \text{ m}) / 2 \times 0.10 \text{ m}$ $(4.57 \text{ m} + 5.15 \text{ m}) / 2 \times 0.40 \text{ m}$ $(5.15 \text{ m} + 5.01 \text{ m}) / 2 \times 0.09 \text{ m}$ $(5.01 \text{ m} + 5.65 \text{ m}) / 2 \times 0.44 \text{ m}$ $(5.65 \text{ m} + 7.07 \text{ m}) / 2 \times 0.41 \text{ m}$ $(7.07 \text{ m} + 8.22 \text{ m}) / 2 \times 1.53 \text{ m}$ $(8.22 \text{ m} + 5.64 \text{ m}) / 2 \times 2.07 \text{ m}$ $(5.35 \text{ m} + 5.17 \text{ m}) / 2 \times 0.14 \text{ m}$ $0.29 \text{ m} \times 0.14 \text{ m} / 2$ $(5.17 \text{ m} + 4.35 \text{ m}) / 2 \times 0.66 \text{ m}$ $(4.35 \text{ m} + 4.46 \text{ m}) / 2 \times 0.15 \text{ m}$ $(4.46 \text{ m} + 2.69 \text{ m}) / 2 \times 1.42 \text{ m}$ $(2.69 \text{ m} + 2.69 \text{ m}) / 2 \times 0.66 \text{ m}$ $2.69 \text{ m} \times 0.61 \text{ m} / 2$	53.14 m ²
10	NF	Büro 9 GE1	$2.18 \text{ m} \times 1.09 \text{ m} / 2$ $(2.18 \text{ m} + 2.78 \text{ m}) / 2 \times 0.78 \text{ m}$ $(2.78 \text{ m} + 4.86 \text{ m}) / 2 \times 0.40 \text{ m}$ $(4.86 \text{ m} + 6.00 \text{ m}) / 2 \times 0.27 \text{ m}$	

11	NF	Serverraum GE1	+ (6.00 m + 5.83 m) / 2 x 0.80 m + (5.83 m + 0.93 m) / 2 x 4.35 m + 0.93 m x 0.24 m / 2 5.67 m x 2.82 m / 2 + (5.67 m + 5.67 m) / 2 x 0.59 m + 5.67 m x 2.83 m / 2	25.66 m ²
12	NF	Büro 10 GE1	(2.23 m + 2.20 m) / 2 x 0.67 m + (2.20 m + 3.64 m) / 2 x 1.46 m + (3.64 m + 3.64 m) / 2 x 0.04 m + (3.64 m + 5.74 m) / 2 x 1.06 m + (5.74 m + 5.73 m) / 2 x 0.57 m + (5.73 m + 7.01 m) / 2 x 0.65 m + (7.01 m + 6.98 m) / 2 x 1.11 m + (6.98 m + 7.16 m) / 2 x 0.09 m + (7.16 m + 7.18 m) / 2 x 2.45 m + 2.15 m x 1.08 m / 2 + (7.18 m + 7.19 m) / 2 x 1.08 m + (9.34 m + 9.32 m) / 2 x 1.50 m + 9.32 m x 4.65 m / 2	19.36 m ²
13	NF	Flur 1 GE1	1.84 m x 0.09 m + 2.09 m x 1.48 m + 1.82 m x 0.32 m + 2.09 m x 0.95 m + (2.09 m + 2.00 m) / 2 x 0.10 m + (2.00 m + 2.01 m) / 2 x 0.94 m + (2.01 m + 1.74 m) / 2 x 0.14 m + 1.65 m x 1.68 m / 2 + 1.11 m x 1.73 m / 2 + (1.70 m + 1.68 m) / 2 x 1.11 m + 1.09 m x 1.68 m / 2 + 1.74 m x 1.73 m / 2 + 1.65 m x 0.82 m / 2	88.83 m ²
14	NF	WC GE1	2.29 m x 1.15 m / 2 + (2.29 m + 2.28 m) / 2 x 0.56 m + 2.28 m x 1.14 m / 2	15.50 m ²
15	NF	WC GE1	1.25 m x 0.61 m / 2 + (1.25 m + 1.28 m) / 2 x 1.04 m + 1.28 m x 0.64 m / 2	3.90 m ²
16	NF	WC GE1	2.04 m x 1.01 m / 2 + (2.04 m + 2.02 m) / 2 x 0.65 m + 2.02 m x 1.00 m / 2	2.11 m ²
17	NF	WC GE1	2.61 m x 1.31 m / 2 + (2.61 m + 2.60 m) / 2 x 0.39 m + 2.60 m x 1.31 m / 2	3.36 m ²
18	NF	WC GE1	1.08 m x 0.53 m / 2 + (1.08 m + 1.12 m) / 2 x 1.05 m + 1.12 m x 0.57 m / 2	4.43 m ²
19	NF	WC GE1	2.16 m x 1.08 m / 2 + (2.16 m + 2.15 m) / 2 x 0.52 m + 2.15 m x 1.07 m / 2	1.76 m ²
20	NF	WC GE1	1.40 m x 0.01 m / 2	3.44 m ²

21	NF	Teeküche GE1	$(1.40\text{ m} + 3.29\text{ m}) / 2 \times 0.95\text{ m}$ $(3.33\text{ m} + 3.29\text{ m}) / 2 \times 0.03\text{ m}$ $(3.29\text{ m} + 0.82\text{ m}) / 2 \times 1.24\text{ m}$ $0.20\text{ m} \times 0.07\text{ m} / 2$ $(0.62\text{ m} + 0.52\text{ m}) / 2 \times 0.07\text{ m}$ $(0.52\text{ m} + 0.32\text{ m}) / 2 \times 0.13\text{ m}$ $(0.32\text{ m} + 0.36\text{ m}) / 2 \times 0.04\text{ m}$ $0.36\text{ m} \times 0.18\text{ m} / 2$ $2.94\text{ m} \times 1.73\text{ m}$ $(1.48\text{ m} + 0.90\text{ m}) / 2 \times 0.59\text{ m}$ $0.90\text{ m} \times 0.45\text{ m} / 2$	5.03 m ²
22	NF	Raum 2 GE1	$(1.69\text{ m} + 2.04\text{ m}) / 2 \times 0.66\text{ m}$ $2.04\text{ m} \times 2.07\text{ m} / 2$	5.99 m ²
23	NF	Büro 11 GE1	$5.07\text{ m} \times 2.53\text{ m} / 2$ $(5.07\text{ m} + 5.04\text{ m}) / 2 \times 0.91\text{ m}$ $(5.04\text{ m} + 3.87\text{ m}) / 2 \times 0.57\text{ m}$ $(3.87\text{ m} + 3.54\text{ m}) / 2 \times 0.20\text{ m}$ $(3.54\text{ m} + 3.23\text{ m}) / 2 \times 0.23\text{ m}$ $(3.23\text{ m} + 2.98\text{ m}) / 2 \times 0.21\text{ m}$ $(2.98\text{ m} + 2.74\text{ m}) / 2 \times 0.24\text{ m}$ $(2.74\text{ m} + 2.56\text{ m}) / 2 \times 0.24\text{ m}$ $(2.56\text{ m} + 2.47\text{ m}) / 2 \times 0.15\text{ m}$ $2.47\text{ m} \times 1.22\text{ m} / 2$	3.34 m ²
24	NF	Flur 2 GE1	$1.48\text{ m} \times 0.25\text{ m}$ $(2.62\text{ m} + 2.91\text{ m}) / 2 \times 0.17\text{ m}$ $(2.91\text{ m} + 3.61\text{ m}) / 2 \times 0.41\text{ m}$ $0.03\text{ m} \times 0.03\text{ m} / 2$ $0.03\text{ m} \times 0.38\text{ m} / 2$ $0.41\text{ m} \times 0.38\text{ m} / 2$ $(3.61\text{ m} + 3.58\text{ m}) / 2 \times 0.07\text{ m}$ $0.40\text{ m} \times 0.03\text{ m}$ $0.40\text{ m} \times 0.03\text{ m}$ $0.07\text{ m} \times 0.07\text{ m} / 2$ $(3.58\text{ m} + 3.46\text{ m}) / 2 \times 0.25\text{ m}$ $(0.47\text{ m} + 0.77\text{ m}) / 2 \times 0.25\text{ m}$ $(3.46\text{ m} + 3.34\text{ m}) / 2 \times 0.24\text{ m}$ $(0.77\text{ m} + 1.13\text{ m}) / 2 \times 0.24\text{ m}$ $(3.34\text{ m} + 3.24\text{ m}) / 2 \times 0.21\text{ m}$ $(1.13\text{ m} + 1.48\text{ m}) / 2 \times 0.21\text{ m}$ $(3.24\text{ m} + 3.15\text{ m}) / 2 \times 0.18\text{ m}$ $(1.48\text{ m} + 1.86\text{ m}) / 2 \times 0.18\text{ m}$ $(3.15\text{ m} + 3.10\text{ m}) / 2 \times 0.12\text{ m}$ $(1.86\text{ m} + 2.19\text{ m}) / 2 \times 0.12\text{ m}$ $(3.10\text{ m} + 3.07\text{ m}) / 2 \times 0.05\text{ m}$ $(2.19\text{ m} + 2.38\text{ m}) / 2 \times 0.05\text{ m}$ $(3.07\text{ m} + 3.33\text{ m}) / 2 \times 0.03\text{ m}$ $(2.38\text{ m} + 2.50\text{ m}) / 2 \times 0.03\text{ m}$ $(3.33\text{ m} + 3.61\text{ m}) / 2 \times 0.03\text{ m}$ $(2.50\text{ m} + 2.79\text{ m}) / 2 \times 0.03\text{ m}$ $(6.40\text{ m} + 6.67\text{ m}) / 2 \times 0.26\text{ m}$ $(6.67\text{ m} + 6.78\text{ m}) / 2 \times 0.17\text{ m}$	18.93 m ²

$$\begin{aligned} &+ (6.78 \text{ m} + 6.85 \text{ m}) / 2 \times 0.20 \text{ m} \\ &+ (6.85 \text{ m} + 6.88 \text{ m}) / 2 \times 0.18 \text{ m} \\ &+ 6.88 \text{ m} \times 0.21 \text{ m} \\ &+ (6.88 \text{ m} + 6.87 \text{ m}) / 2 \times 0.06 \text{ m} \\ &+ 1.49 \text{ m} \times 0.15 \text{ m} \\ &+ (2.48 \text{ m} + 2.29 \text{ m}) / 2 \times 0.15 \text{ m} \\ &+ (2.22 \text{ m} + 2.05 \text{ m}) / 2 \times 0.16 \text{ m} \\ &+ 0.07 \text{ m} \times 0.16 \text{ m} / 2 \\ &+ 2.05 \text{ m} \times 1.02 \text{ m} / 2 \\ &2.74 \text{ m} \times 1.36 \text{ m} / 2 \\ &+ 0.44 \text{ m} \times 0.22 \text{ m} / 2 \\ &+ (2.74 \text{ m} + 3.18 \text{ m}) / 2 \times 0.22 \text{ m} \\ &+ (0.44 \text{ m} + 0.79 \text{ m}) / 2 \times 0.17 \text{ m} \\ &+ (3.18 \text{ m} + 3.18 \text{ m}) / 2 \times 0.17 \text{ m} \\ &+ (0.79 \text{ m} + 0.79 \text{ m}) / 2 \times 0.01 \text{ m} \\ &+ (3.18 \text{ m} + 3.18 \text{ m}) / 2 \times 0.01 \text{ m} \\ &+ (0.79 \text{ m} + 1.14 \text{ m}) / 2 \times 0.18 \text{ m} \\ &+ (3.18 \text{ m} + 3.18 \text{ m}) / 2 \times 0.18 \text{ m} \\ &+ (1.14 \text{ m} + 1.51 \text{ m}) / 2 \times 0.18 \text{ m} \\ &+ (3.18 \text{ m} + 3.55 \text{ m}) / 2 \times 0.18 \text{ m} \\ &+ (5.06 \text{ m} + 10.61 \text{ m}) / 2 \times 2.76 \text{ m} \\ &+ 0.16 \text{ m} \times 0.08 \text{ m} / 2 \\ &+ (10.61 \text{ m} + 10.77 \text{ m}) / 2 \times 0.08 \text{ m} \\ &+ (10.92 \text{ m} + 12.70 \text{ m}) / 2 \times 0.89 \text{ m} \\ &+ (12.70 \text{ m} + 12.72 \text{ m}) / 2 \times 0.98 \text{ m} \\ &+ (12.72 \text{ m} + 12.77 \text{ m}) / 2 \times 0.03 \text{ m} \\ &+ (12.77 \text{ m} + 12.86 \text{ m}) / 2 \times 0.59 \text{ m} \\ &+ (12.86 \text{ m} + 13.01 \text{ m}) / 2 \times 0.78 \text{ m} \\ &+ (13.01 \text{ m} + 13.12 \text{ m}) / 2 \times 0.61 \text{ m} \\ &+ (13.12 \text{ m} + 13.05 \text{ m}) / 2 \times 0.10 \text{ m} \\ &+ 0.11 \text{ m} \times 0.10 \text{ m} / 2 \\ &+ 0.67 \text{ m} \times 1.05 \text{ m} / 2 \\ &+ (12.49 \text{ m} + 13.56 \text{ m}) / 2 \times 1.05 \text{ m} \\ &+ (13.56 \text{ m} + 13.61 \text{ m}) / 2 \times 0.02 \text{ m} \\ &+ (13.61 \text{ m} + 13.96 \text{ m}) / 2 \times 0.75 \text{ m} \\ &+ (13.96 \text{ m} + 13.89 \text{ m}) / 2 \times 0.04 \text{ m} \\ &+ (13.89 \text{ m} + 12.60 \text{ m}) / 2 \times 0.87 \text{ m} \\ &+ (12.60 \text{ m} + 11.74 \text{ m}) / 2 \times 0.61 \text{ m} \\ &+ (9.23 \text{ m} + 8.90 \text{ m}) / 2 \times 0.03 \text{ m} \\ &+ (2.50 \text{ m} + 2.24 \text{ m}) / 2 \times 0.03 \text{ m} \\ &+ (8.90 \text{ m} + 8.85 \text{ m}) / 2 \times 0.01 \text{ m} \\ &+ (2.24 \text{ m} + 2.14 \text{ m}) / 2 \times 0.01 \text{ m} \\ &+ (8.85 \text{ m} + 8.68 \text{ m}) / 2 \times 0.05 \text{ m} \\ &+ (2.14 \text{ m} + 1.97 \text{ m}) / 2 \times 0.05 \text{ m} \\ &+ (8.19 \text{ m} + 8.16 \text{ m}) / 2 \times 0.07 \text{ m} \\ &+ (1.97 \text{ m} + 1.74 \text{ m}) / 2 \times 0.07 \text{ m} \\ &+ (8.16 \text{ m} + 8.11 \text{ m}) / 2 \times 0.12 \text{ m} \\ &+ (1.74 \text{ m} + 1.46 \text{ m}) / 2 \times 0.12 \text{ m} \\ &+ (5.38 \text{ m} + 5.37 \text{ m}) / 2 \times 0.02 \text{ m} \\ &+ (1.46 \text{ m} + 1.42 \text{ m}) / 2 \times 0.02 \text{ m} \\ &+ (5.37 \text{ m} + 5.43 \text{ m}) / 2 \times 0.03 \text{ m} \end{aligned}$$

16.97 m²

+ (1.42 m + 1.35 m) / 2 x 0.03 m
+ (5.43 m + 6.92 m) / 2 x 0.66 m
+ 1.35 m x 0.66 m / 2
+ (6.92 m + 8.23 m) / 2 x 0.58 m
+ (8.23 m + 7.99 m) / 2 x 2.19 m
+ (10.73 m + 10.57 m) / 2 x 1.48 m
+ (10.57 m + 11.84 m) / 2 x 1.15 m
+ (11.84 m + 11.73 m) / 2 x 0.94 m
+ 11.73 m x 1.31 m
+ 9.11 m x 0.27 m
+ 11.11 m x 0.98 m
+ (11.11 m + 11.17 m) / 2 x 0.69 m
+ 0.52 m x 0.30 m / 2
+ 11.17 m x 0.30 m
+ 0.67 m x 0.39 m / 2
+ 11.69 m x 0.39 m
+ 0.40 m x 0.39 m / 2
+ (0.01 m + 0.02 m) / 2 x 0.01 m
+ (12.76 m + 12.80 m) / 2 x 0.02 m
+ (12.83 m + 13.18 m) / 2 x 0.26 m
+ (13.18 m + 13.30 m) / 2 x 0.43 m
+ (9.10 m + 8.36 m) / 2 x 0.97 m
+ (4.20 m + 3.27 m) / 2 x 0.97 m
+ (8.36 m + 8.72 m) / 2 x 0.28 m
+ (3.27 m + 3.00 m) / 2 x 0.28 m
+ (8.72 m + 8.85 m) / 2 x 0.95 m
+ (3.00 m + 2.08 m) / 2 x 0.95 m
+ (8.85 m + 8.91 m) / 2 x 0.43 m
+ (2.08 m + 1.25 m) / 2 x 0.43 m
+ (8.91 m + 8.87 m) / 2 x 0.02 m
+ (1.25 m + 1.20 m) / 2 x 0.02 m
+ (8.87 m + 8.97 m) / 2 x 0.07 m
+ (1.20 m + 1.06 m) / 2 x 0.07 m
+ (8.97 m + 8.75 m) / 2 x 0.14 m
+ (1.06 m + 0.79 m) / 2 x 0.14 m
+ (8.75 m + 8.74 m) / 2 x 0.01 m
+ (9.22 m + 8.81 m) / 2 x 0.17 m
+ (9.47 m + 7.85 m) / 2 x 0.68 m
+ (7.85 m + 4.91 m) / 2 x 0.86 m
+ (4.91 m + 4.04 m) / 2 x 1.72 m
+ (4.04 m + 3.73 m) / 2 x 0.71 m
+ (3.73 m + 3.69 m) / 2 x 0.02 m
+ (3.69 m + 3.17 m) / 2 x 1.25 m
+ (3.17 m + 2.80 m) / 2 x 1.20 m
+ (2.80 m + 2.65 m) / 2 x 1.03 m
+ 0.01 m x 0.01 m / 2
+ (2.66 m + 2.55 m) / 2 x 1.11 m
+ 0.01 m x 0.01 m / 2
+ (2.55 m + 2.54 m) / 2 x 0.01 m
+ (2.56 m + 2.55 m) / 2 x 1.39 m
+ (2.55 m + 2.59 m) / 2 x 1.18 m

Objekt: Musterstraße 2 - 44444 Musterstadt

26	NF	Eingang GE1	+ 2.59 m x 1.30 m / 2 1.80 m x 0.64 m / 2 + (1.80 m + 1.91 m) / 2 x 0.04 m + 0.03 m x 0.02 m / 2 + (0.03 m + 0.05 m) / 2 x 0.02 m + (1.96 m + 2.30 m) / 2 x 0.32 m + (2.30 m + 2.37 m) / 2 x 0.62 m + 2.37 m x 2.55 m + (2.37 m + 2.33 m) / 2 x 0.41 m + (2.33 m + 2.05 m) / 2 x 0.22 m	323.60 m ²
27	NF	Kopierraum GE1	+ 2.05 m x 0.71 m / 2 2.05 m x 1.02 m / 2 + 1.99 m x 2.03 m / 2 + 0.40 m x 0.41 m / 2 + 0.40 m x 1.63 m + 0.40 m x 0.40 m / 2 + 2.05 m x 2.04 m / 2 + 1.99 m x 0.99 m / 2	11.00 m ² 6.96 m ²
Summe Nutzfläche EG				756.09 m²

Berechnung BGF und BRI nach DIN 277

Die Berechnung erfolgt auf der Grundlage vom örtlichen Aufmaß

BGF

Nr.	Geschoss	Flächenberechnung	Fläche m ²
1	EG	$2.84 \times 1.42 / 2$ $(2.84 + 6.40) / 2 \times 1.77$ $3.57 \times 1.77 / 2$ $(9.96 + 11.53) / 2 \times 0.78$ $(11.53 + 11.52) / 2 \times 2.70$ $(11.52 + 13.49) / 2 \times 0.99$ $0.13 \times 0.07 / 2$ $(13.49 + 13.62) / 2 \times 0.07$ $(13.75 + 20.83) / 2 \times 3.54$ $(20.83 + 20.84) / 2 \times 0.26$ $0.20 \times 0.09 / 2$ $(20.64 + 20.65) / 2 \times 0.09$ $(20.65 + 20.70) / 2 \times 0.59$ $(20.70 + 20.85) / 2 \times 0.83$ $(20.85 + 21.05) / 2 \times 0.72$ $(21.05 + 21.23) / 2 \times 0.07$ $(21.23 + 21.29) / 2 \times 0.19$ $0.16 \times 0.08 / 2$ $(21.13 + 21.16) / 2 \times 0.08$ $(21.16 + 21.42) / 2 \times 0.67$ $(21.42 + 21.86) / 2 \times 0.93$ $(21.86 + 22.14) / 2 \times 0.51$ $(22.14 + 21.68) / 2 \times 0.31$ $(21.68 + 21.74) / 2 \times 0.05$ $(21.74 + 21.32) / 2 \times 0.30$ $(21.32 + 20.53) / 2 \times 1.22$ $(13.40 + 13.42) / 2 \times 0.08$ $(5.59 + 5.44) / 2 \times 0.08$ 13.42×0.07 $(5.44 + 5.29) / 2 \times 0.07$ 13.42×1.17 $2.35 \times 1.17 / 2$ $(2.93 + 0.55) / 2 \times 1.17$ 13.42×0.27 $0.55 \times 0.27 / 2$ 13.42×0.28 $(13.42 + 14.40) / 2 \times 1.03$ 14.40×2.15 14.40×0.09 2.36×0.09 13.78×0.75 2.36×0.75 13.78×0.68 5.74×0.68 $(13.78 + 13.18) / 2 \times 0.50$ 5.74×0.50 $(13.18 + 13.10) / 2 \times 0.47$ 5.74×0.47 $(13.10 + 13.37) / 2 \times 0.21$ 5.74×0.21 $(13.37 + 13.46) / 2 \times 0.31$	



5.74 x 0.31
(13.46 + 13.65) / 2 x 0.65
(5.74 + 6.41) / 2 x 0.65
(13.65 + 13.73) / 2 x 0.29
(6.41 + 6.42) / 2 x 0.29
(13.73 + 13.87) / 2 x 0.48
(6.48 + 6.48) / 2 x 0.48
(13.87 + 13.18) / 2 x 0.85
(6.48 + 6.47) / 2 x 0.85
0.18 x 0.22 / 2
0.12 x 0.22
0.12 x 0.15 / 2
(14.93 + 15.13) / 2 x 0.38
(6.47 + 6.46) / 2 x 0.38
0.02 x 0.07 / 2
0.12 x 0.05 / 2
0.12 x 0.02
(0.05 + 0.02) / 2 x 0.05
0.04 x 0.02 / 2
0.02 x 0.02 / 2
(15.08 + 15.12) / 2 x 0.07
(6.46 + 6.46) / 2 x 0.07
(15.32 + 15.48) / 2 x 0.18
(6.46 + 6.46) / 2 x 0.18
(15.48 + 15.32) / 2 x 0.06
0.04 x 0.06 / 2
(6.46 + 6.46) / 2 x 0.06
0.38 x 0.82 / 2
21.01 x 0.82
0.82 x 0.82 / 2
(21.38 + 20.95) / 2 x 0.92
(20.95 + 20.68) / 2 x 0.72
0.18 x 0.08 / 2
(20.68 + 20.65) / 2 x 0.08
(20.83 + 20.78) / 2 x 0.14
(20.78 + 20.55) / 2 x 0.09
(20.55 + 20.36) / 2 x 0.73
(20.36 + 20.20) / 2 x 0.83
(20.20 + 20.16) / 2 x 0.56
0.23 x 0.12 / 2
(20.16 + 20.15) / 2 x 0.12
(20.38 + 20.38) / 2 x 0.08
(20.38 + 20.11) / 2 x 0.14
(20.11 + 20.16) / 2 x 0.66
(20.16 + 20.30) / 2 x 0.65
(20.30 + 20.45) / 2 x 0.41
0.23 x 0.10 / 2
(20.45 + 20.49) / 2 x 0.10
(20.72 + 20.75) / 2 x 0.04
(20.75 + 20.51) / 2 x 0.15
(20.51 + 20.83) / 2 x 0.47
(20.83 + 21.28) / 2 x 0.49
(21.28 + 21.58) / 2 x 0.25
0.36 x 0.13 / 2
(21.58 + 21.74) / 2 x 0.13
(22.10 + 22.21) / 2 x 0.09
(22.21 + 15.25) / 2 x 4.94
0.36 x 0.13 / 2
(14.88 + 14.69) / 2 x 0.14
(14.69 + 13.52) / 2 x 0.84
(13.52 + 14.68) / 2 x 0.80
(14.68 + 12.22) / 2 x 1.96
(8.82 + 6.70) / 2 x 1.70

$3.40 \times 1.70 / 2$
 $(6.70 + 5.05) / 2 \times 1.32$
 $(5.05 + 6.85) / 2 \times 2.35$
 $(6.85 + 6.57) / 2 \times 1.31$
 $(6.57 + 1.49) / 2 \times 4.51$
 $1.49 \times 0.38 / 2$

850.93

Summe BGF

850.93 m²

BRI

Nr.	Geschoss	Fläche Geschoß [m ²]	Fläche Dachschräge [m ²]	Höhe Geschoß [m]	mittlere Höhe Dachschräge [m]	Faktor	Volumen [m ³]
1	EG	850.93		3.70		1.00	3148.44
Summe BRI							3151.85 m³

Schnittdarstellung



3.40
EG

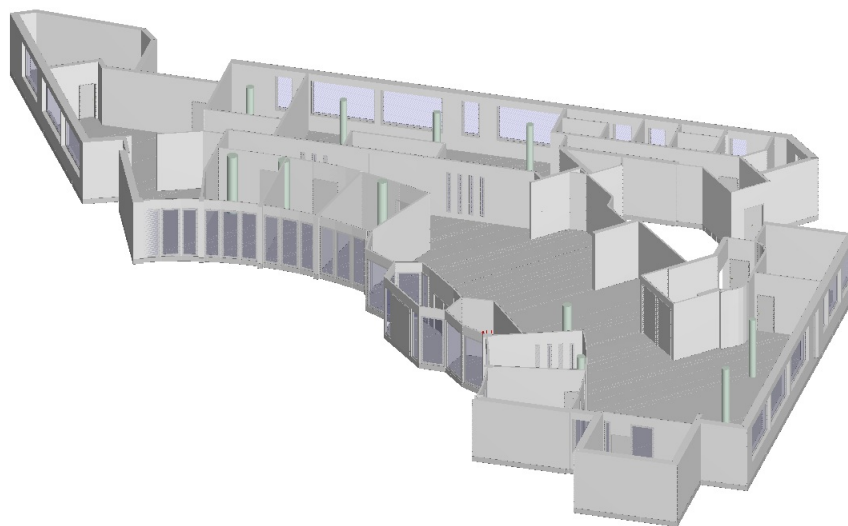


Maßstab 1 : 296
0.0.3.0.2.0m

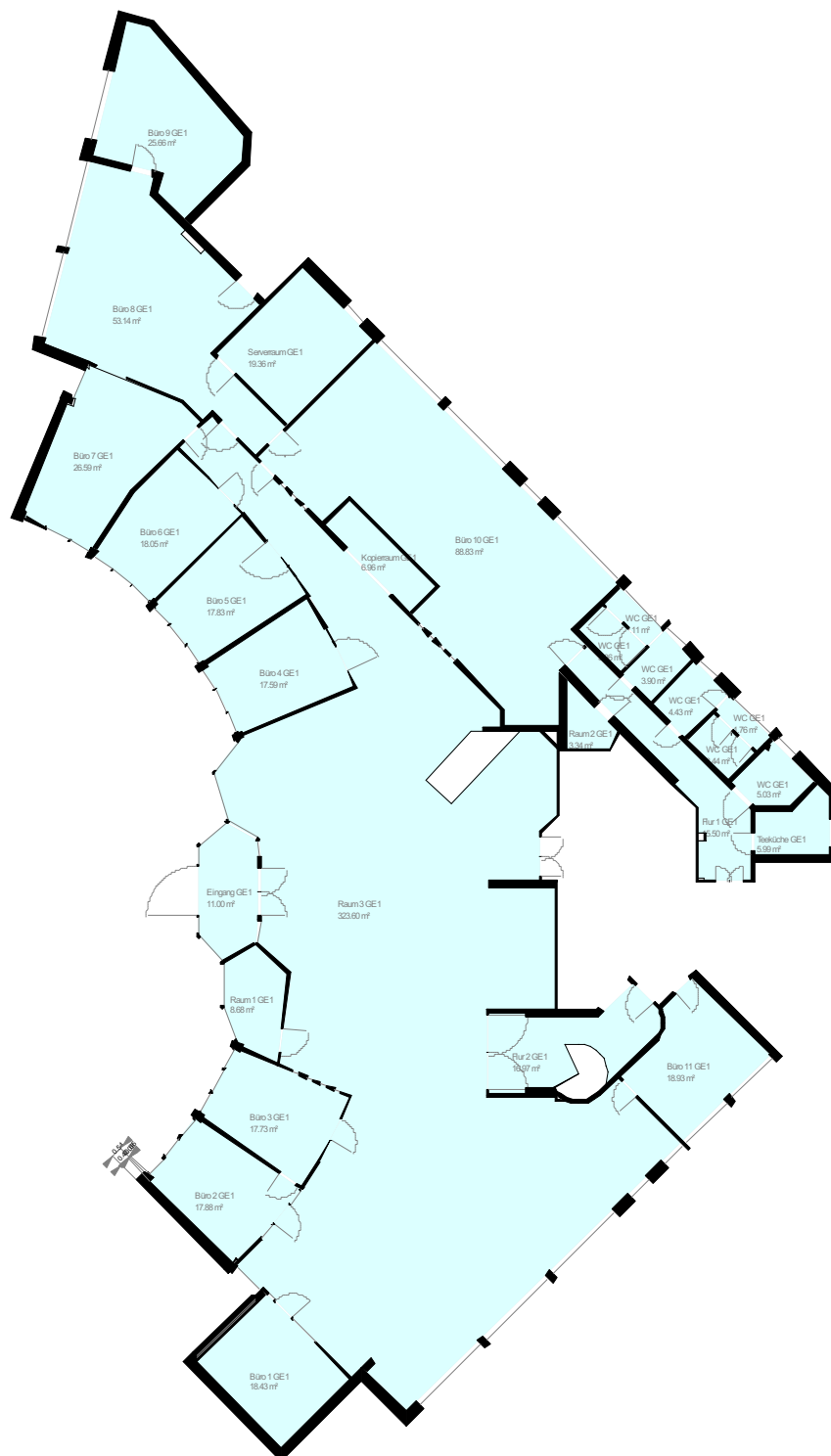


Objekt: Musterstraße 2 - 44444 Musterstadt

EG: 3D Darstellung



EG: Grundriss



Maßstab 1 : 296
0.0.3.0.2.0m

